



Broadcast Television Technology Trust and the TV Camera Museum



The restoration work is progressing well, but there are a lot of items to be found to preserve originality, can you help?



Pulse & Bar Generator BBC GE4/504 Gresham Lion Electronics Ltd. Dual standard Pulse & Bar Generator. These were commercially available and used by the GPO amongst others.
A Valve unit.



Small chrome plated **cupboard latch**, To Match original fittings, several needed. It is thought that these may have been used on small boats in the 1970s



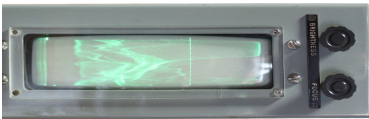
For the Philips tape recorder, both sexes needed. Difficult plug continental in origin.



Philips **record replay amplifiers** to suit the Philips EL3503 deck. Cica 1963. Handbooks and Circuits for amps & deck needed.



Vintage **Papst 5 inch fan** 115v or 230v. These all metal fans were common in the 60's but now are prone to bearing failure & noise. Again looking for correct type for originality. Used a lot and need several



BBC white units :-

GE4/508 Plug generator
GE1/508A Sawtooth and lift generator.
AM4/507 0dB distribution amplifier
AM4/508 6dB distribution amplifier
AM18/508 Stabilising amplifier
CH1/13E or F Portable case 10-12 slot
Any units considered for the general collection

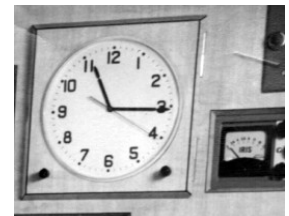
Oscilloscope tube

As spares for the waveform monitors
Mullard/Philips type DG16-22 or CV2352
An unusual rectangular face plate 6x2"

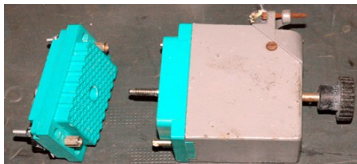


Pye Monitor type 84 2844 These are the 14" versions. Two more are needed + some for spares in any condition.

This picture is the original 1963 clock, and it was a mains synchronous one. We need to sort the "illumination" and it is thought that the two black button things below it are lights on a stalk of some sort.



Insuloid rubber cable clamps size 4 or 5



Elcon or Varicon connectors

These go between the camera control unit and the control panel and are the 75 pin size.



Radio Microphone Receiver

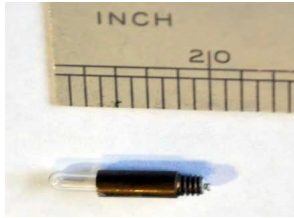
This is the BBC designed RC4-1 receiver. It was not part of the original MCR21 installation, but was retro-fitted soon after MCR21 entered service and would be a suitable substitute for the Eddystones which are quite rare.



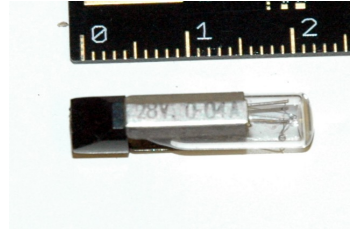
Locks

These are the Yale locks that are fitted to the side lockers. Some of the original ones are there but all are in poor corroded condition. Possibly Yale type 229 or M69

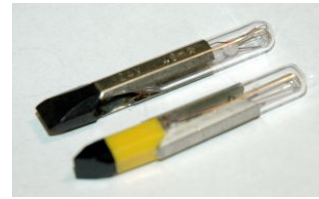
Bulbs:-



This tiny bulb is used to illuminate the meters on the power distribution panel. Two are used in series from a 2 volt transformer. (1 volt each!!)



For the BBC Vision mixer, 28V at 40ma. 2 cm. Long same style as the standard GPO type but much shorter!



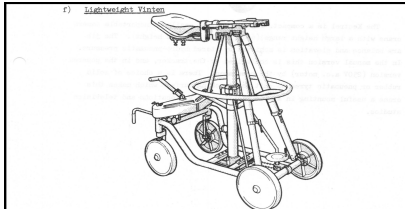
Standard GPO bulb 24v in the lower current rating 40 ma or 60ma. To save cooking the buttons!

Fuses:-



These are the period correct 1.25 inch fuses that we would like to use everywhere. There are lots & Lots needed!

Ideally 1A. 2 A 3A & 5A perhaps a few 7 or 10A all slow blow .We have many more modern fuses, but would like to use the vintage ones



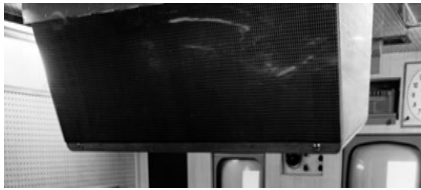
A Vinten camera Dolly

One thing we have been trying to source is a dolly like the one in the picture. Mainly because it featured in the BBC publicity pictures taken outside Wembley in 1963

Pye Mk6 camera

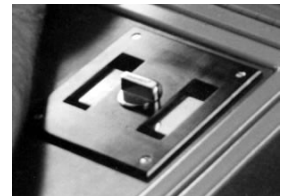
However if any small parts can be found that would be most useful.

Focus control, Viewfinder hood, Lenses, Cue light, Documentation & Handbooks



Loudspeaker

The original was a Pye type 845703, a little larger than the BBC one (LS1/2) that is currently fitted. Pictures of the MCR in service show the Pye LS so it would be nice to find or make it. It is a curious "not square" shape.



Ashtray

These are the original ash trays. There is some debate as to if they should be reinstalled if we were ever to find them



MCR21 needs a better **starting handle**. It needs to be a very long one, a reach of 925mm.

EMI Monitor type TV124

This monitor was used outside and is the correct commentators monitor as used. A nasty thing made by EMI to a BBC spec! It was or purported to be waterproof.



We have a bit of a space crisis

- The camera collection and library continues to grow.
- A indoor home for MCR21 to keep the weather off is urgently needed. Not too far from here. Ideally both needs at the same place....*Can you can help*



Explore our YouTubeE page with this QR code, Please "like" the videos
www.mcr21.org.uk Brian@mcr21.org.uk www.tvcameramuseum.org