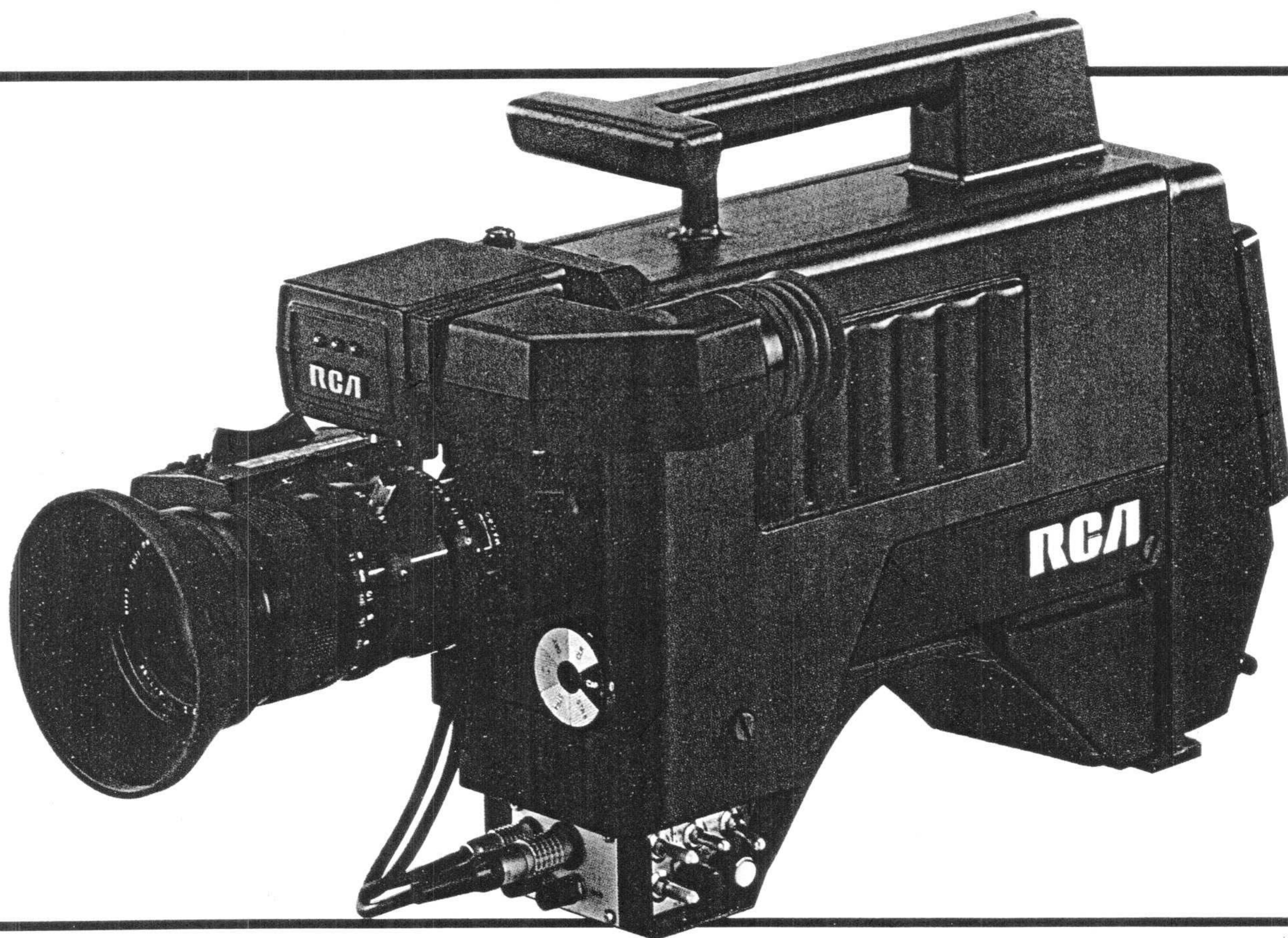


**HAWKEYE II
ENG/EFP CAMERA**

Catalog CA.1620

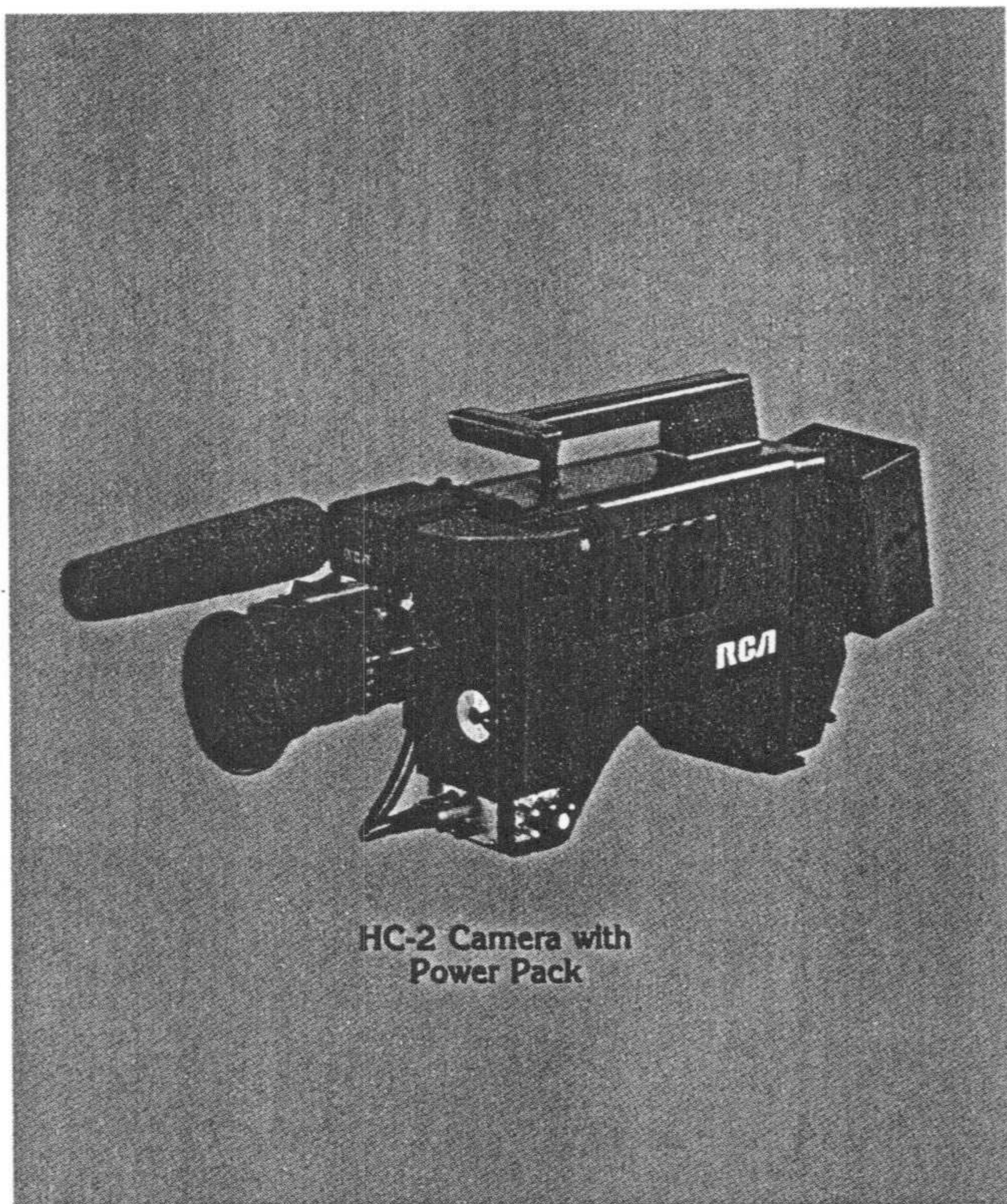
HC-2

**A CAMERA BUILT FOR
THE EVERY DAY BATTLE**



RCA

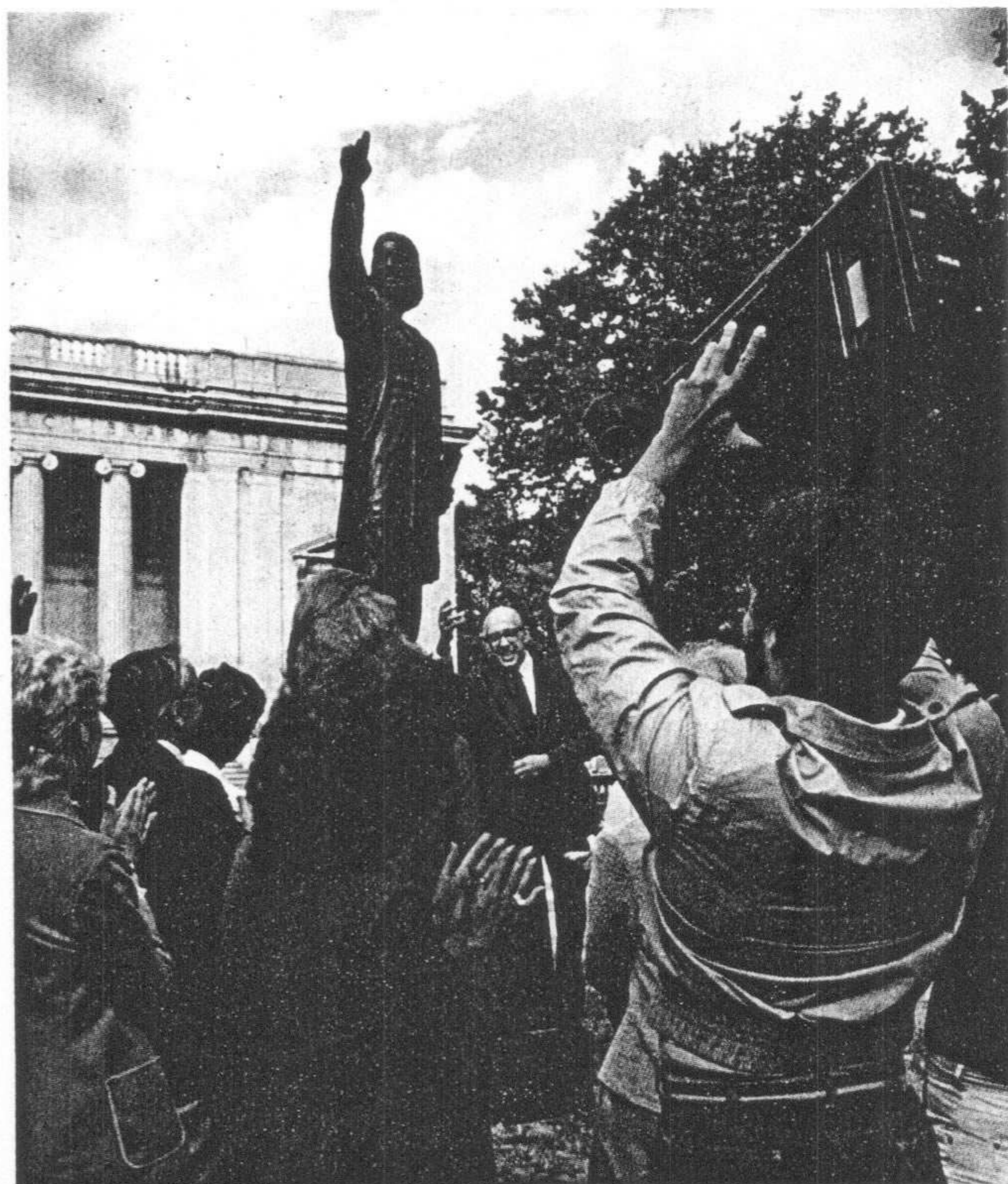
HAWKEYE II ENG/EFP CAMERA



HC-2 Camera with
Power Pack



HCR-2 Recording Camera



Flexible: Adapts to a range of user operational preferences.

More features:

- High performance 1/2-inch Saticon® pickup tubes
- Excellent colorimetry and registration stability
- Automatic white balance, black balance and flare control
- Automatic Comet Tail Suppression (CTS)
- Automatic iris with variable metering area
- Switchable +9 and +18 dB gain modes
- Switch controls clustered for operator convenience
- Six-position filter wheel
- Designed for worldwide operating standards
- Selection of lenses and microphones

High Performance 1/2-Inch Pickup Tubes

With new design 1/2-inch pickup tubes, the HC-2 achieves excellent resolution and sensitivity. Precision tube and yoke assemblies and factory collimation of each channel provide superior registration stability and complement the high resolution Saticons®. New low noise preamp circuits contribute to the camera's exceptionally high signal-to-noise ratio and sensitivity.

The totally sealed optical system in the HC-2 utilizes an f/1.4 prism and is closed by a dustproof one-quarter wave quartz window which reduces polarized glare.

Full Range of Automatics

As expected in a quality, full feature camera, the HC-2 incorporates a range of automatic functions. Included are: Automatic white balance, black balance, flare control and iris (with variable metering area). The HC-2 also includes a digital long term memory for storing balance settings.

Three independent circuits provide Automatic Comet Tail Suppression for each channel. All preamps and CTS circuits are mounted on a common module.

Switchable +9 and +18 dB Gain

Switching in the +9 and +18 dB high gain modes results in an exceptional picture down to one footcandle, with black balance also stabilized.

Integral Viewfinder

The integral viewfinder provides an array of useful LED

displays for the camera operator, including:

- Peak indicators for two audio channels
- Low Battery
- Record Confidence (for VTR)
- Warning (that a VTR function requires checking)
- VTR Record Time

A Rugged Camera Package

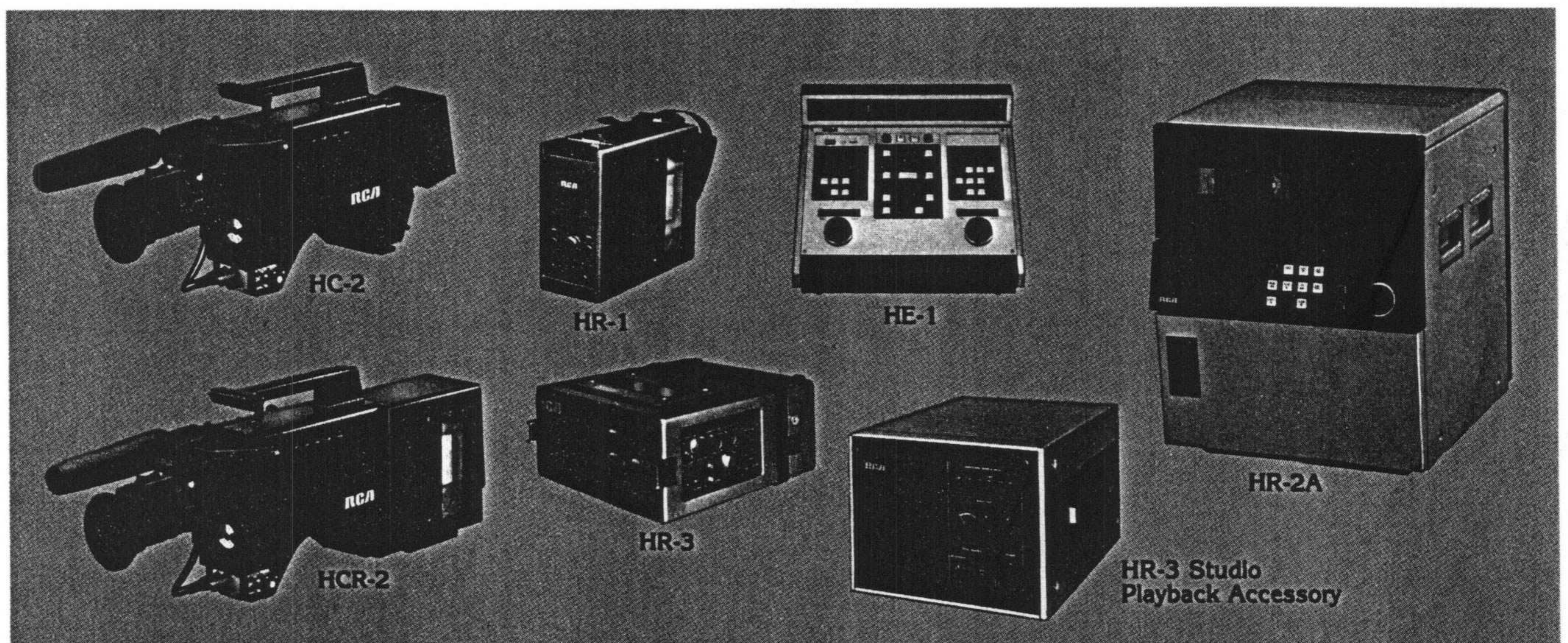
With its integrated packaging, the HC-2 delivers quality pictures under extreme operating conditions. The main-frame is a rigid aluminum die casting for maximum stability. Impregnated gaskets seal the camera against dust, moisture and RFI.

Excellent Compatibility

The HAWKEYE II camera is designed to fit into a variety of ENG/EFP system configurations. It can be used with 3/4-inch or 1-inch VTRs and component recorders. The HCA-2 Adaptor attached to the rear of the HC-2 Camera provides cable interconnect facilities to VTRs and other equipment. For genlock operation, a plug-in module is added to the HCA-2 Adaptor. The adaptor also includes a clip for mounting a standard on-board battery.

Total HAWKEYE Family Flexibility

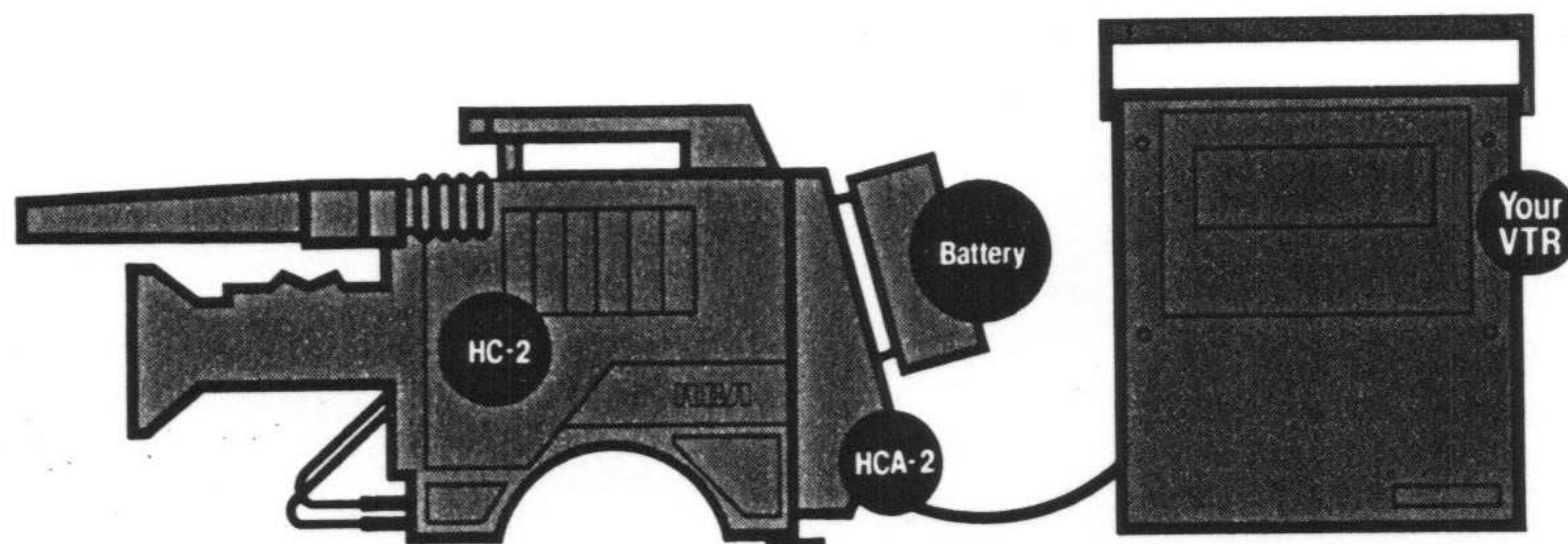
Since the HC-2 is an integral element in the HAWKEYE family of video products, it is totally compatible with the ChromaTrak portable and studio VTRs, edit controller and system accessories.



A CHOICE OF SYSTEM CONFIGURATIONS

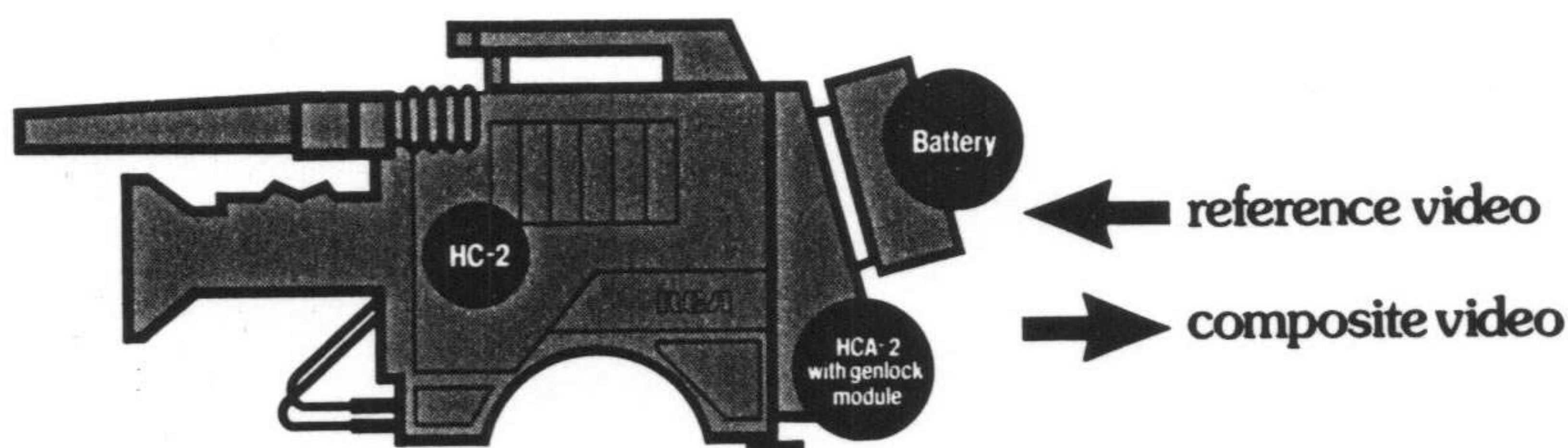
1. Compatible

With the HCA-2 Adaptor, the HC-2 Camera can be used with 3/4-inch or 1-inch VTRs as a two-unit system.



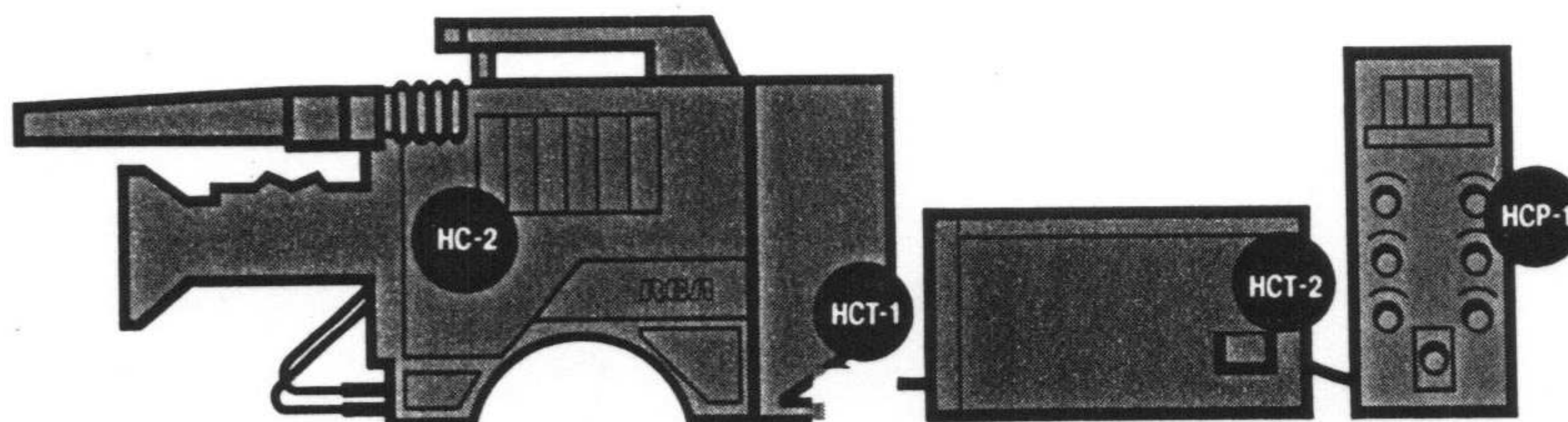
2. Genlock Capability

Simply plug a genlock module into the HCA-2 Adaptor and supply a composite reference signal.



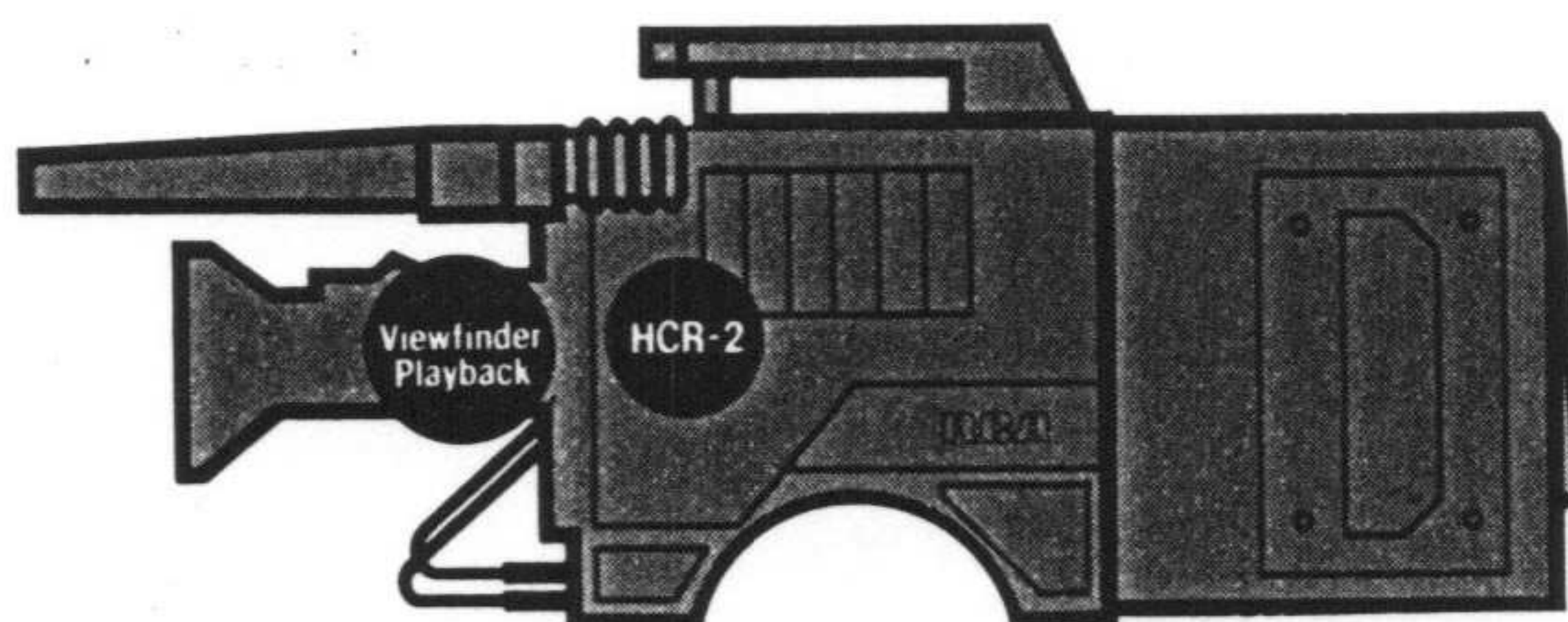
3. Triax for Extended Range Operation

The HCT-1 Adaptor and HCT-2 base station permit operating the HC-2 camera with up to 5,000 feet of low loss triax cable. HC-2 cameras can also be used at facilities already equipped with triax cable.



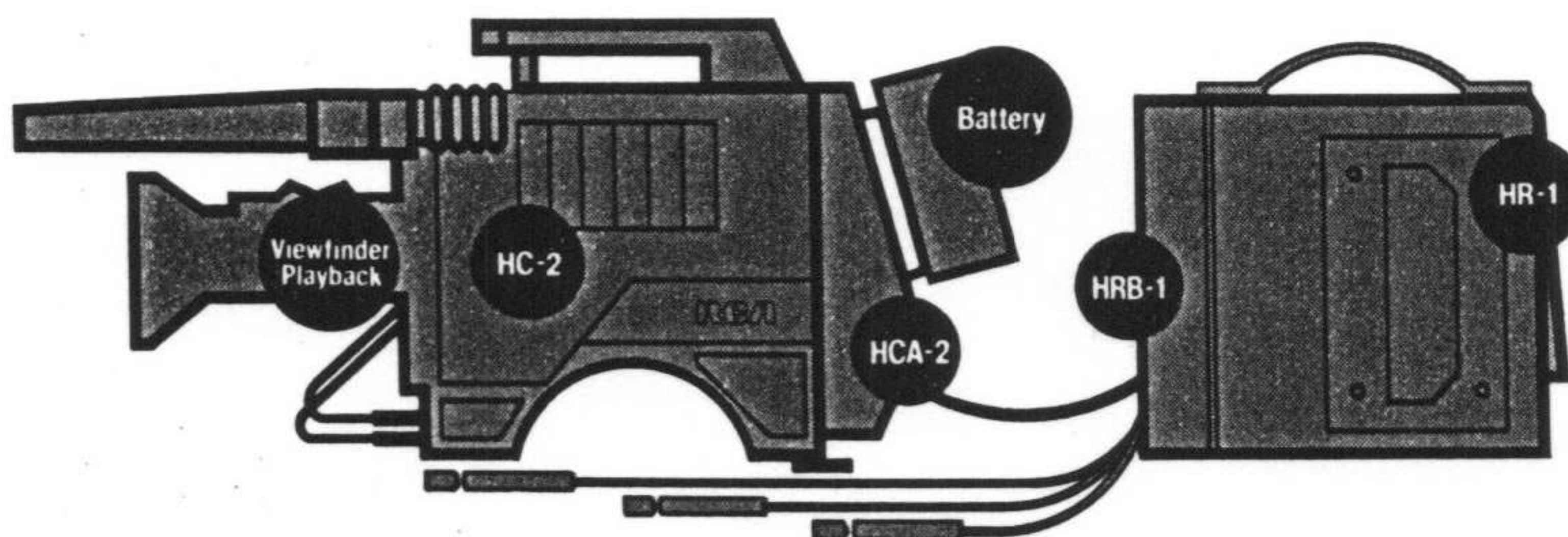
4. HCR-2 Recording Camera System

Mate the HC-2 camera with the HR-1 or HR-3 Portable ChromaTrak VTRs for the perfect recording camera system.



5. Matched Separates

As a two-unit system, the HC-2 and HR-1 or HR-3 combine for top quality video and audio performance. For added flexibility, the HRB-1 Base-band Adaptor for the HR-1 permits mixing audio from the on-camera mic plus three other microphones.



HAWKEYE II: A TOUGH, QUALITY PERFORMER

- **Excellent picture quality**
- **High Sensitivity: 58 dB S/N ratio**
- **Sturdy: rugged cast covers; die-cast aluminum mainframe**
- **Totally sealed optical system**
- **Integral viewfinder with switchable external tally**
- **New T-Bar handle**
- **Complete line of compatible system accessories**

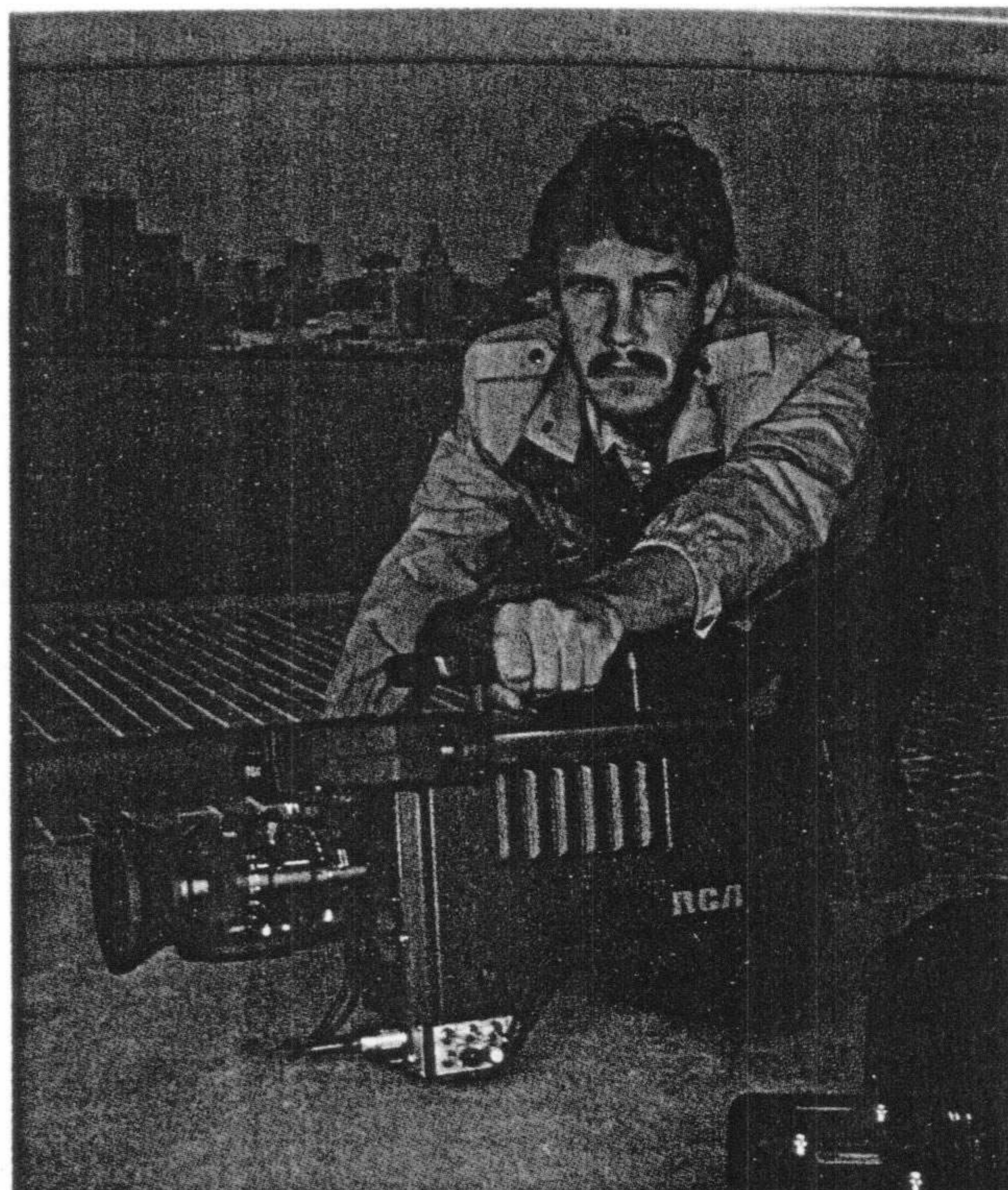
The new HAWKEYE II portable is designed to withstand the day-in, day-out abuse that news and field production cameras are subjected to.

This one is a tough, lightweight performer that produces broadcast quality pictures under a wide range of operating environments. The signal-to-noise ratio of 58 dB provides sensitivity for effective operation at very low light levels.

The HC-2's aluminum die-cast mainframe provides sturdy internal support for the plug-in module boards, while rugged cast covers take the external beating and seal out moisture, dirt and RF interference.

For added operational convenience, there's a new T-Bar handle for easier carrying and better camera control for those difficult low angle shots. And the new integral viewfinder with switchable external tally enhances field performance with smoother, faster "takes".

Further extending HAWKEYE II camera versatility is a full range of available system accessories.



Specifications: HC-2 ENG/EFP Camera

SCAN STANDARDS

EIA 525/60
 CCIR 625/50

COLOR STANDARDS

NTSC, PAL-B, PAL-M, SECAM-IIIB

SENSITIVITY

3200° K light incident on a
 60% reflectance Munsell 56 footcandles
 white, to make 100 I.R.E.
 units video at f/1.4

REGISTRATION

Zone 1 0.1%
 Zone 2 0.2%

(Excludes Registration Deviation in Lens)

GEOMETRY ≤1.0%, overall
 (Excludes Geometry Deviation in Lens)

STABILITY Specifications are met over a range of ±27°F (±15°C)
 from the set-up ambient temperature

POWER

Input 12v DC nominal (11.5-14v)
 Consumption Saticon, 28 watts

SIGNAL-TO-NOISE RATIO

Measurement conditions:
 170 nanoamps signal,
 gamma = 1.0, capped
 black, aperture correc-
 tion off, electrical band-
 width 100% at 4.2 MHz,
 Rhode & Schwarz meter,
 subcarrier trap, 10 kHz
 trap.

NTSC
 58 dB

PAL
 55 dB

RESOLUTION

Limiting w/aperture correction 600 lines

WEIGHT

HC-2 Camera (with VF, no lens) 11.7 lb. (5.3 kg)
 HCA-2 Two-Piece Adaptor 2.1 lb. (.9 kg)
 HCT-1 Triax Adaptor 3.5 lb. (1.6 kg)

ENVIRONMENTAL

Ambient Temperature Limits -4° to +113°F
 (-20° to +45°C)

Ambient Relative Humidity 0 to 90% RH

Operational Altitude To 15,000 ft. ASL (3048 m)

DIMENSIONS

Length 12" (305 mm)
 Height:—Optics Area 9.5" (241 mm)
 —Module Area 6.3" (160 mm)
 Width 3.6" (91 mm)

HAWKEYE System Components and Accessories

HC-2 ENG/EFP Camera
 HR-1 Portable VTR
 HR-3 Portable VTR with Field Playback
 HCR-2 Recording Camera
 HR-2A Studio VTR
 HE-1 Edit Controller

Accessories

HCA-2 Camera Adaptor
 HCA-2G Adaptor with Genlock Module
 HCT-1 Triax Adaptor
 HCT-2 Triax Base Station
 HCP-1 Remote Control Panel
 HRB-1 Baseband Adaptor for HR-1