

# A Vintage Pye Camera

*It's been a while since we had any vintage cameras in CQ-TV so when Giles Read, G1MFG sent me some nice pictures of a Pye Mk3 on display in the Museum of Photography in Charleoi, Belgium, I thought it time to correct that deficiency!*

This Pye camera, model 2014RE serial number 328, is in fine condition and is set in a mocked up studio scene with lamps, monitors and an interesting early caption roller. There were no cables and there wasn't enough of anything to make a functional studio but it did nicely set the scene.



The camera is a fairly late production model with the improved side and top ventilation. The "E" indicates it was able to operate on the continental 819 line standard, at the time in the UK we were on 405 lines! The 3 inch Image Orthicon tube it used was very capable at 405 or even 625 line operation, but it was felt, in the UK, that 819 lines was somewhat optimistic.

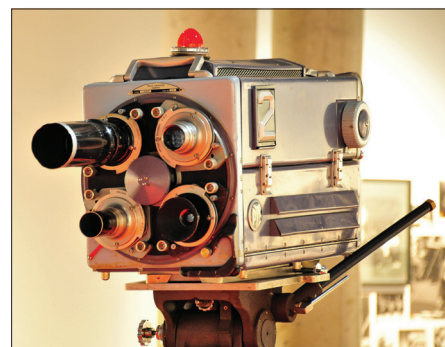
The Pye Mk3 had a number of interesting features, all the optical controls were motorised, the turret change and iris control and the focus control was a servo. The large blue knobs on both sides of the camera drove the position of the complete scanning yoke and hence the optical focus. Just by the focus controls were two micro switch buttons that could open or close the lens iris. One nice feature of the design was the pre-positioning of the focus setting when the turret was rotated to present a different lens to the tube. In the lens mounting plate there were resistors that formed part of the servo "bridge", these made contact with spring loaded studs and the servo automatically moved the yoke to more or less the correct focus point. All of this in a camera that first saw the light of day in 1951 just two thirds of a century ago.

*Brian Summers, G8GQS & Giles Read, G1MFG*

One of the options for this camera was a remote control box for the optics, this sat by the side of the camera's CCU in the control room. So the convention of the cameraman doing lens selection and focus and the CCU operator controlling the iris became somewhat blurred, no pun intended!

Giles writes:- *The camera still had its distinctive smell, which was wonderful. I wasn't able to ascertain how much of the*

*internals were still in place but if it's anything like the other exhibits in the museum it's probably (fairly) complete, if not necessarily in working order. All of the other thousands of exhibits were in superb condition and included things I'd never seen before, such as some early Autochrome colour photographs made with dyed potato starch granules that were of stunning quality, despite being a century old. The museum describes itself as the most important museum of photography in Europe, and on the basis of my visit, I'd believe it. If you're ever passing in the vicinity of Belgium it's worth a look.*



► The camera is displayed complete with an authentic selection of lenses.

**A brochure for the Type 2014 camera is here:-**

[www.tvcameramuseum.org/pdfs/pye/pyemk3broc1.pdf](http://www.tvcameramuseum.org/pdfs/pye/pyemk3broc1.pdf)

**Details of the museum here:-**

<http://tinyurl.com/y7urk6xl>



► The Pye 2014 sits on a wheeled Houston Fearless pedestal in a large room whose walls are decorated with TV related memorabilia and artworks.