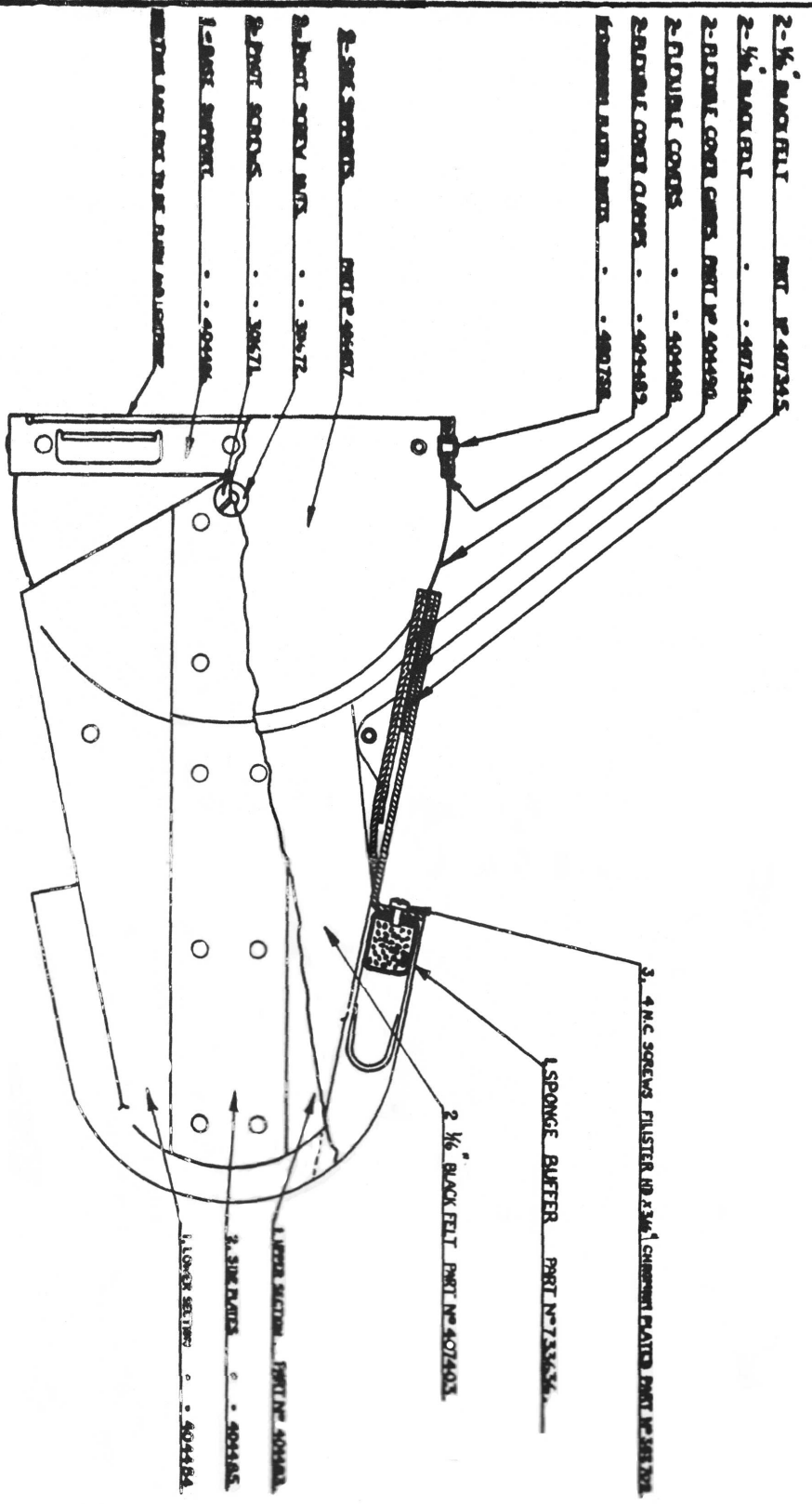


ISSUES
 1. 22-10-84
 2. REFERENCE
 7333 25 BILTER,
 PUNCH OF REFERENCE
 7333 33 NUMBERED
 ORDER OF ASSEMBLY
 NUMBER,
 NAME & GRADE
 PART NO 800-93,
 FIN 7-3-92



ASSEMBLY NOTE 733332

POINT OUT SIDE SET SPEC.
 POINT INSIDE POINT FROM 390-290 (161 POINTS)

ORDER OF ASSEMBLY
 1) ASSEMBLE FRONT AND REAR SECTION TO SET POINT.
 2) APPLY POINT TO POINT FROM 390-290 (161 POINTS) OF EACH
 SIDE WITH USE OF SET POINTS.
 3) POINT TO SET POINTS.
 4) POINT TO SET POINTS.
 5) POINT TO SET POINTS.
 6) POINT TO SET POINTS.
 7) POINT TO SET POINTS.
 8) POINT TO SET POINTS.
 9) POINT TO SET POINTS.
 10) POINT TO SET POINTS.
 11) POINT TO SET POINTS.
 12) POINT TO SET POINTS.
 13) POINT TO SET POINTS.
 14) POINT TO SET POINTS.
 15) POINT TO SET POINTS.
 16) POINT TO SET POINTS.
 17) POINT TO SET POINTS.
 18) POINT TO SET POINTS.
 19) POINT TO SET POINTS.
 20) POINT TO SET POINTS.
 21) POINT TO SET POINTS.
 22) POINT TO SET POINTS.
 23) POINT TO SET POINTS.
 24) POINT TO SET POINTS.
 25) POINT TO SET POINTS.
 26) POINT TO SET POINTS.
 27) POINT TO SET POINTS.
 28) POINT TO SET POINTS.
 29) POINT TO SET POINTS.
 30) POINT TO SET POINTS.
 31) POINT TO SET POINTS.
 32) POINT TO SET POINTS.
 33) POINT TO SET POINTS.
 34) POINT TO SET POINTS.
 35) POINT TO SET POINTS.
 36) POINT TO SET POINTS.
 37) POINT TO SET POINTS.
 38) POINT TO SET POINTS.
 39) POINT TO SET POINTS.
 40) POINT TO SET POINTS.
 41) POINT TO SET POINTS.
 42) POINT TO SET POINTS.
 43) POINT TO SET POINTS.
 44) POINT TO SET POINTS.
 45) POINT TO SET POINTS.
 46) POINT TO SET POINTS.
 47) POINT TO SET POINTS.
 48) POINT TO SET POINTS.
 49) POINT TO SET POINTS.
 50) POINT TO SET POINTS.
 51) POINT TO SET POINTS.
 52) POINT TO SET POINTS.
 53) POINT TO SET POINTS.
 54) POINT TO SET POINTS.
 55) POINT TO SET POINTS.
 56) POINT TO SET POINTS.
 57) POINT TO SET POINTS.
 58) POINT TO SET POINTS.
 59) POINT TO SET POINTS.
 60) POINT TO SET POINTS.
 61) POINT TO SET POINTS.
 62) POINT TO SET POINTS.
 63) POINT TO SET POINTS.
 64) POINT TO SET POINTS.
 65) POINT TO SET POINTS.
 66) POINT TO SET POINTS.
 67) POINT TO SET POINTS.
 68) POINT TO SET POINTS.
 69) POINT TO SET POINTS.
 70) POINT TO SET POINTS.
 71) POINT TO SET POINTS.
 72) POINT TO SET POINTS.
 73) POINT TO SET POINTS.
 74) POINT TO SET POINTS.
 75) POINT TO SET POINTS.
 76) POINT TO SET POINTS.
 77) POINT TO SET POINTS.
 78) POINT TO SET POINTS.
 79) POINT TO SET POINTS.
 80) POINT TO SET POINTS.
 81) POINT TO SET POINTS.
 82) POINT TO SET POINTS.
 83) POINT TO SET POINTS.
 84) POINT TO SET POINTS.
 85) POINT TO SET POINTS.
 86) POINT TO SET POINTS.
 87) POINT TO SET POINTS.
 88) POINT TO SET POINTS.
 89) POINT TO SET POINTS.
 90) POINT TO SET POINTS.
 91) POINT TO SET POINTS.
 92) POINT TO SET POINTS.
 93) POINT TO SET POINTS.
 94) POINT TO SET POINTS.
 95) POINT TO SET POINTS.
 96) POINT TO SET POINTS.
 97) POINT TO SET POINTS.
 98) POINT TO SET POINTS.
 99) POINT TO SET POINTS.
 100) POINT TO SET POINTS.

DO NOT SCALE THIS DRAWING.

VISOR MK II (CONTINUABLE)	
ISSUED BY: SAC AND SGT, CONTROL	
DRN	ASSEMBLY # 733332
TND	
CHD	
APP	

TT